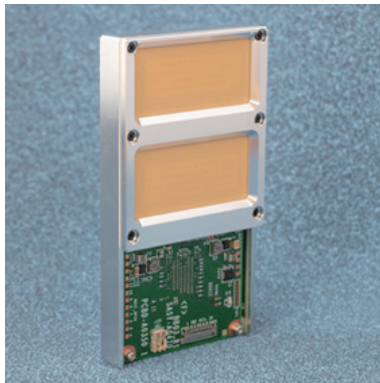


60 GHz

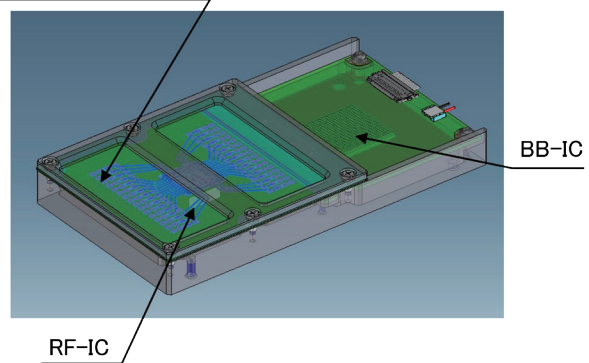
Millimeter Wave Wireless Communications Module

External view



Configuration

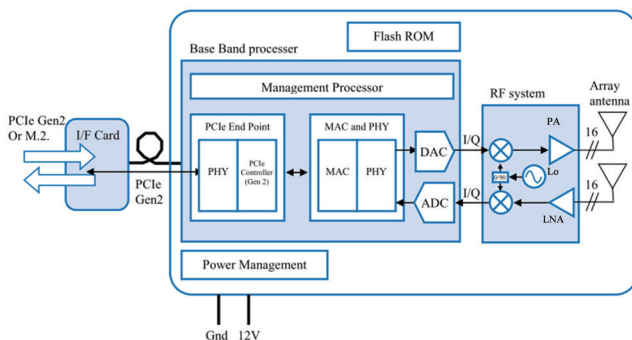
Phased Array Antenna



Overview

- Low loss LCP materials and high output RF-IC
- Long distance & high capacity transmission: > 1 Gbps at 500 m
- Stress-free installation: automatic beamforming over ± 45 degrees
- Wide band: full coverage of the 57 to 71 GHz frequency bands
- Multiple connections: up to 30 devices accommodated by a single access point

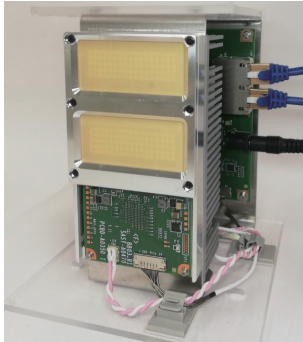
Block diagram



Specifications

Parameter	Unit	Min	Max	Note
Frequency range	GHz	57	71	CH1-CH6
Channel bandwidth	GHz	0.54 / 1.08 / 2.16		Quarter / Half / Full
EIRP	dBm	—	40	
Azimuth beamforming	deg	+/- 45		
Interface	—	PCIe Gen2		x2 lane
Power supply voltage	V	12 (Typ.)		
Size	mm	60 x 110 x 14.4		W x H x D

Development kits for customer evaluation

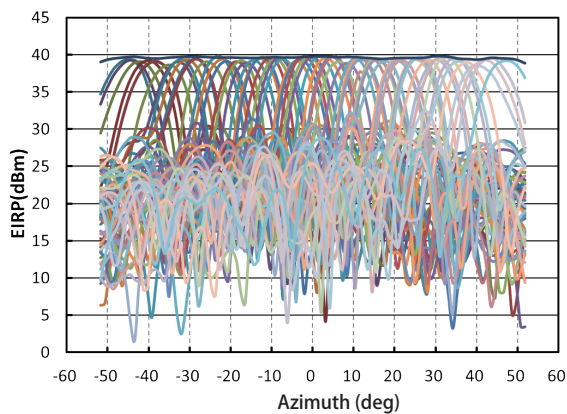


System development kit
Consists of 60GHz Com. Module and NPU for indoor evaluation

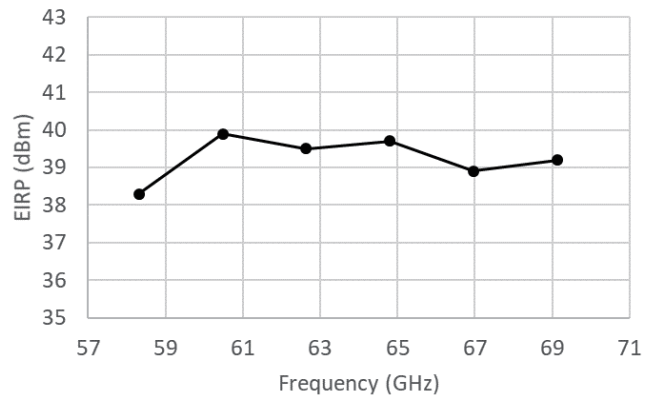


Outdoor evaluation kit
Consists of 60GHz Com. Module, NPU, and a waterproof and dustproof enclosure for outdoor evaluation (equivalent to IP53)

Measurement data

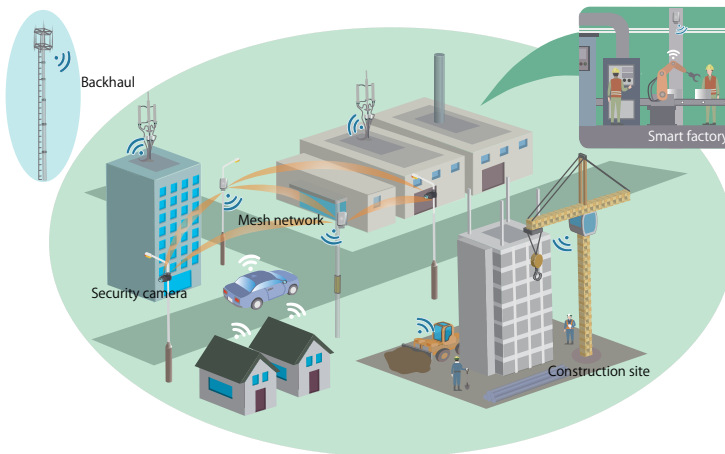


Beamforming characteristics



Output power (EIRP) performance

Applications



- High-speed private networks
- Smartification in commercial & industrial facilities
- High-definition, low-latency wireless video networks
- V2X for commercial & industrial vehicles
- Wireless backhaul & wireless mesh networks